



Community Matters

Port Moody Police Department



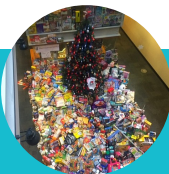
Community Engagement

This past Christmas our Community Services Section launched an exciting community initiative #HereComesSanta.

Over the course of six nights, 18 community volunteers walked over 25,000 steps each night to alert residents of Santa's (&Mrs. Claus's) imminent arrival. The excitement of the flashing police lights and sirens, combined with a chorus of festive music, dancing elves, and of course tasty candy canes, left kids (and kids at heart) beaming with joy.



We would like to thank our community partners: Thredz, for constructing Santa's sleigh; the City of Port Moody for the use of a trailer; and Canadian Tire for donating candy canes.



Through Port Moody citizens and community partners' generosity, we donated over 2500 pounds of food and unwrapped toys to the SHARE society.



With the success of #HereComesSanta, the PMPD looks forward to escorting "Jolly Old Saint Nick" to your neighbourhood once again next Christmas!



DID'JA KNOW

Our Traffic Unit utilizes a Mobile Traffic Monitor (Speed Trailer) throughout Port Moody to gather valuable data. The Monitor displays both the posted limit and the driver's speed.

We analyze the data to determine if there is a traffic concern that might require further enforcement. Use of innovative technology is another way we work to keep our residents safe.

Hmm, who'da thunk?



Reach Out

www.PortMoodyPolice.com
@PortMoodyPD
@portmoodypd
media@portmoodypolice.com

Author and Graphic Design: Jason Maschke & Melissa Wideen

Stats, Facts, & Figures

Our staff may rotate, but our dedication to serve our community never wavers.

In early February, our Community Services Section welcomed Constable Sam Cleave to take over the role as Mental Health Officer (MHO) for the Port Moody Police Department.

Constable Cleave will be replacing Constable Ohashi, whom is credited with developing the MHO position to where it is today.

Constable Cleave is excited for the challenges her new position brings. We wish her the best of luck!



Mental Health Matters

PMPD Crime Analyst Karin Sibilo reviewed the 2019 statistics in relation to all mental health-related calls. Sibilo noted that upon analysis of the department's total call volume in 2019, nearly 10% of those calls had a mental health-related component



MESSAGE FROM THE CHIEF

It is my sincere honour to lead the Port Moody Police Department into a new decade. I would like to take this opportunity to thank the residents of Port Moody for your continued confidence and trust in the PMPD.

As the police chief for this great city, I am so very proud of the hard work that the dedicated men and women of the Port Moody Police Department have done in 2019, and will continue to do moving forward into 2020.

I have little doubt that our success as a policing agency has been dependent on proactive and innovative policing strategies, combined with engagement with our community organizations, and cooperation with our many law enforcement partners.

I remain optimistic that by ensuring community safety is at the forefront of our priorities, Port Moody will remain one of the safest communities in British Columbia.